

DONATION FORM

THANK YOU for making a difference to the disadvantaged people & communities in Australia, and for recognising the power of creativity in affecting sustainable change in our lives.

(Simply choose an option below, complete the required details, and kindly return your donation form to Creativity Australia)



HOW DO YOU WANT TO MAKE A DIFFERENCE?

- \$100** **\$200** Assist with travel to and from choir practice for one disadvantaged person for 6 or 12 months
- \$500** Sponsor someone from a disadvantaged background to participate in a choir program for one year
- \$1,000** Join a choir and directly sponsor a disadvantaged person to be in a choir (Melbourne only)
- \$2,500** Inspire and mentor young people to be creative leaders (3-month program)
- \$5,000** **\$10,000** Fund a short-term, or long-term creative project for a disadvantaged group or community
- \$20,000** Help us to set up a choir and network for social change in a disadvantaged or bushfire-affected community for 6 months
- \$25,000** 'Inspiring Minds' Creativity Awards (per category). An annual national awards program recognising creativity in various fields of endeavour (Health, Education, Banking & Finance, Insurance, Manufacturing, Industry, Government. You choose your category)
- \$30,000** Fund a 12 month research project by Deakin University on the benefits of singing and creativity for wellbeing and increased employability outcomes
- \$40,000** Help us to set up a choir and network for social change in a disadvantaged or bushfire-affected community for one year
- \$5,000 - 50,000** Become a major supporter of the Inaugural Australian Conference on Creativity 'Inspiring Minds' (late 2010/early 2011)
- \$50,000** Sponsor a research project to measure a one year choir intervention program for young people with emerging mental health issues at Orygen Youth Health
- Creativity Bequest** Unlimited capacity to make a difference and ensure creative thinking and leadership lives on
- Workplace Wellbeing** Improve your wellbeing through regular giving. Monthly Amount \$

YOUR DETAILS

OTHER AMOUNT? I would like to donate \$

Name:

Contact Number:

Address:

Email:

TOTAL AMOUNT \$

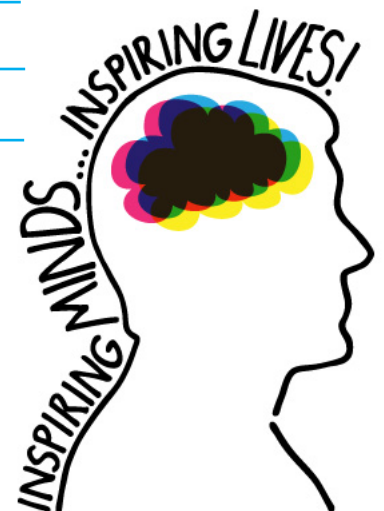
- I enclose a cheque payable to **The Creativity Australia Fund**
- Please debit my MasterCard / Visa (please circle)

Card No#

Expiry Date: CCV No#

Cardholder's Name:

Cardholder's Signature:



ALL DONATIONS ARE FULLY TAX-DEDUCTIBLE

Please fax, email, or send your completed form to Creativity Australia

Phone: +61 3 9682 9689 **Fax:** +61 3 9682 9687 **Email:** enquiries@creativityaustralia.org.au

Address: Suite 5, 204 St Kilda Road, Southbank VIC 3006 Australia **Web:** www.creativityaustralia.org.au